

Highfield Boats

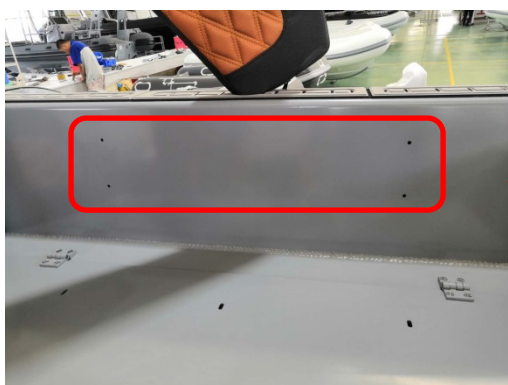
Backrest Installation Guide

(Sport 520-560)

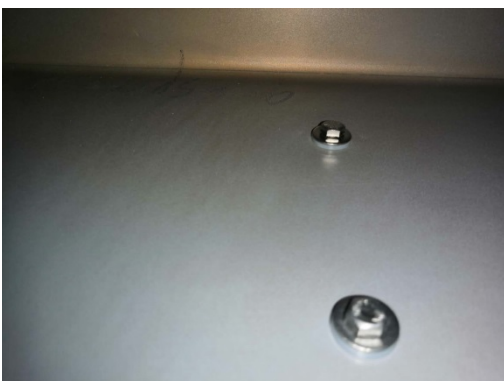
1. Before installing the backrest, please install the side cushions first.



2. Match the holes between the back and cushion.



3. Install the bolts provided with the backrest from inside of the rearseat with washer and nut. Fasten the bolts with wrench.





Congratulations, you have successfully installed the backrest.